

2012 National Forging & Horseshoeing Competition Rules Mobile, Alabama

Judges

Billy Crothers, AWCF

Hank Highfield, CJF

Jake Engler, CJF

Judging Rules

Judging is based upon rules set forth here, rules and information provided at the on-site competitor's meeting, drawings presented by the AFA Rules Committee, and by information forwarded in Chapter Nine of the AFA's Farrier Certification Program booklet. Competitors will be mailed a copy of the AFA booklet and a blank judging sheet after their entry is processed.

Forging and/or shoeing that fails to accord with these rules and specifications will be disqualified immediately and will not be scored or judged.

During judging, competitors are not allowed to talk to judges. Doing so will be grounds for disqualification.

Spectators may watch the judging process, but may not interfere with or question the judges. When possible, horses and/or shoes will be available for inspection upon completion of judging. Judge's score sheets will not be available to competitors or spectators before the announcement of class winners.

General Rules and Information

Entry

Forging competitions are open to everyone. There will be a flat fee of \$300 for AFA members and \$450 for non-AFA members to enter all classes. The Draft Class is a separate entry. ***All entries must be postmarked by January 1, 2012.***

New Contestant Convention Registration Fees for 2012: These new registration fees are designed to offset the cost to the competitors who do not have the opportunity to attend many of the lectures that are scheduled at the same time as the contest.

Competitors who enter all classes in the contest will pay a convention registration fee of only \$125 (previously \$250). Contestants entering the Draft Class only will pay a convention registration fee of only \$175 (previously \$250).

On-Site Veterinarian

A veterinarian will be present during all live shoeing activities. If a medical condition occurs during shoeing, time will be stopped and an examination completed. If the competitor causes such a condition, s/he will be disqualified. If the competitor does not cause such a condition, s/he may continue without penalty.

Horse Handlers

Each competitor is responsible for supplying his or her own horse handler in live shoeing classes. The handler will not aid, assist, advise, or in any way be involved with the competitor during shoeing. No restraining device, such as a twitch or war bridle, is permitted. The use of lip, mouth, nose or bar chain is allowed, provided no abuse to the animal is rendered by its use.

Stewards

A steward will be assigned to each competitor. The steward shall ensure compliance with the competition rules by the competitor and notify the chief steward for any breach of rules. In live shoeing classes, the steward will bring the horse to the competitor's horse handler and return the horse to the holding area after competition.

Propane

In the interest of safety, propane cylinders are rented at the competition site, and no outside cylinders are allowed. Competitors will list and pay for the number of cylinders they require on their entry forms. Upon arrival, competitors will be issued coupons for the number of propane cylinders ordered.

Safety Glasses

All persons on the competition floor will be required to wear safety glasses. Competitors who fail to do so will be immediately disqualified from the respective class. Handlers, stewards, or other persons on the competition floor who refuse to wear safety glasses will be asked to leave the competition floor immediately.

AFA Team Membership

To be eligible for the American Farriers Team, a competitor must be an AFA member in good standing, an AFA Certified Journeyman Farrier, and be a citizen of the United States or have permanent resident status residing in the USA.

Foreign Materials

All shoes and feet must be completely free of foreign material. Waxing, oiling or otherwise treating shoes or hooves will result in disqualification.

Disqualification

Prior to judging, the Chief Steward has the final authority to disqualify competitors for non-compliance with stated rules and/or for other inappropriate actions, including but not limited to using abusive or profane language, evidencing general conduct unbecoming of a professional farrier, laming a horse during live shoeing, and/or abusing a horse during live shoeing.

Bar Stock

All bar stock will bear the mark of the AFA and will be furnished to competitors just before the Chief Steward calls for the competition to begin. Bar stock may not be marked or cut by the competitor before starting.

Tools and Devices

Hand tools and top anvil tools are allowed. No mechanical benders are permitted. A top anvil toe bender that is non-mechanical, non-hydraulic, or non-electric, or any other device powered by the competitor, is considered a top anvil tool and is permitted. Grinders, stall jacks, portable anvils or devices other than a stationary anvil are not allowed. A shoeing block or foot stand shall be used only to rest horse hooves.

Site Information

For set up, competitors will note that this year's competition will be on rubber mats, provided by the American Farrier's Association.

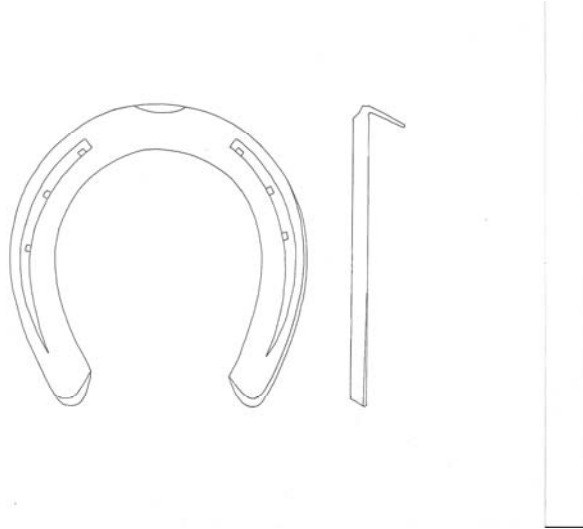
Awards

In addition to the awards mentioned with the specific classes, other awards include an Overall High Point Award, a National High Point Award, and a Reserve National High Point Award. Additional awards and sponsors will be announced at the competition.

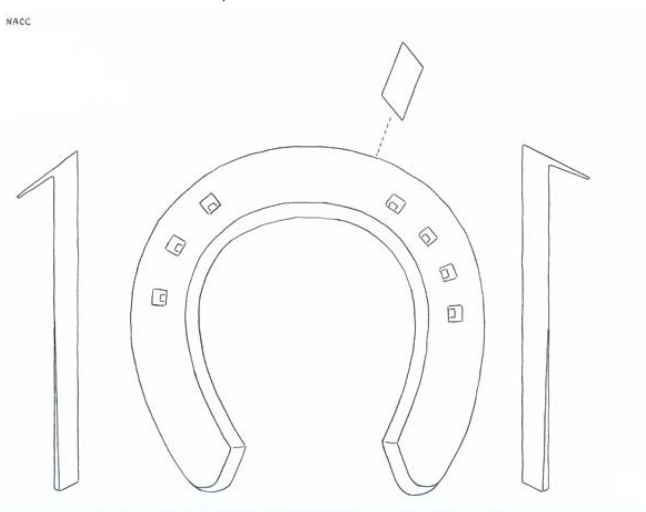
Vector NACC/Qualifier Class

The Vector NACC Qualifier Class, open to all competitors, requires competitors to forge two shoes: a beveled front shoe and a fullered front shoe. The shoes are judged and placed from one to twenty, with the top twenty finishers qualifying to compete in the Vector NACC Live Shoeing class.

- Fullered Front Shoe
 - 12" X 5/16" X 3/4"
 - Fullered, toe clipped
 - Punched for 6 nails (Vector 5CH or 5SB)



- Beveled Front Shoe
 - 13" X 1" X 1/2"
 - Massolate clip
 - Beveled outer & inner edges
 - Near front shoe
 - 7 nails, 7-E



Time Limit: 45 minutes

Live Shoeing Class

The top twenty from the Vector NACC Qualifier Class will compete in the Vector NACC Live Shoeing Class in reverse order, with the competitor in 20th place competing first and the competitor in 1st place competing last. Forging the same shoes as made in the Vector NACC Qualifier Class, competitors will shoe one front foot and make a specimen shoe for the opposite front foot.

Rule change for 2012: Contestants will be allowed but not required to use a Striker (Fireman) during the live shoeing in the North American Challenge Cup. The striker may not rasp or be involved with the horse in any way. The striker's sole purpose will be to provide help swinging the sledge hammer. The striker will not be required to pay entry fee for the class. As in the Draft Class, farriers who have been members of a national team (any nation) past or present may not work together in this class.

The front foot will be shod with a hand-forged shoe made from 14" X 5/16" X 3/4" bar stock. The toe-clipped shoe will be fullered and punched with 6 nail holes for Vector #5 city head or Vector #5 slim blade nails, which will be provided by the stewards. Competitors must use the nails provided and the required number of nails per shoe.

The beveled specimen front shoe to be forged for the opposite front foot will be made from 13" X 1/2" X 1" bar stock. The shoe will be punched with 7 nail holes for Vector 7E nails, have a massolate clip, and be beveled outer & inner edges. The specimen shall be 5 5/8" wide (tolerance +/- 2 millimeters), with the width measured at the widest part of the hoof surface.

If the horse has a shoe on, the competitor may not remove it until the start of the class. The competitor may not pick up the foot to clean or otherwise inspect it before the start of the competition. The competitor will notify the steward when the foot is ready to be judged.

A time limit of 15 minutes is set for hoof preparation, and, to facilitate the judging process, competitors will begin at specific intervals. The first judge will score the dressed foot. The next judge will score shoe quality and fit. Stewards will notify the judge when this portion is ready to be judged. Competitors should allow enough time to nail and finish. After time expires, the third judge will score nailing and finish.

A finished job is defined as a foot with nails clinched, which by definition means the nails are at least bent down against the hoof wall. A competitor will be disqualified if the time limit is exceeded. The competitor must still complete the horse, even if time has expired.

A scoreboard will show names and scores of the competitors as the class progresses. Specimen shoe scores will be kept confidential until the AFA Awards Banquet. Score sheets will be available at the banquet.

Time Limit: 60 minutes

Two-Person Draft Class

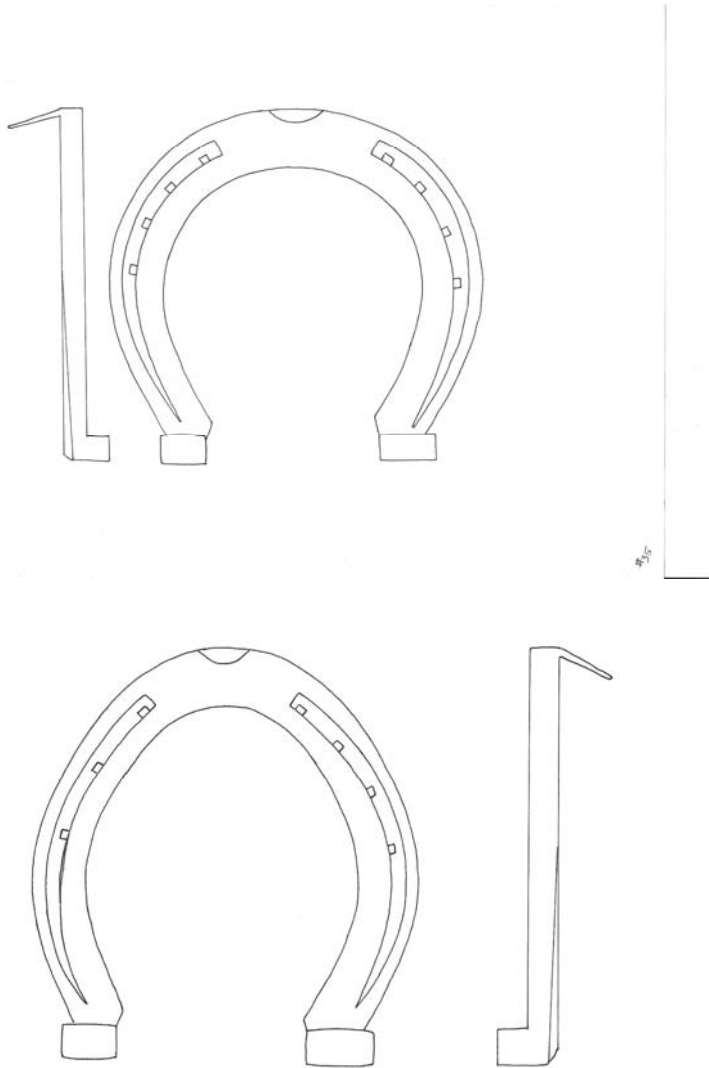
Farriers who have been members of a national team (any nation) past or present may not work together in this class. One farrier will make a pair of front shoes; the other farrier will make a pair of hind shoes. The shoes to be made by the first farrier are not specified. Points are awarded equally to each farrier.

One competitor will make one pair of front shoes from 18" x 1/2" x 1 1/4" bar stock, hammer-drawn toe clip, scotch heels, fullered, and punched for eight 10E nails.

The other competitor will make a pair of hind shoes from 17" x 1/2" x 1 1/4" bar stock, hammer-drawn toe clip, scotch heels, fullered, punched for seven 10E nails.

Steel for the second set of shoes can enter the fire when the first pair comes out for the last time, but the second set cannot be taken from the fire until the first set is on the ground. Filing or rasping is prohibited, and no flatters are allowed.

Time Limit: 70 minutes



Journeyman Class

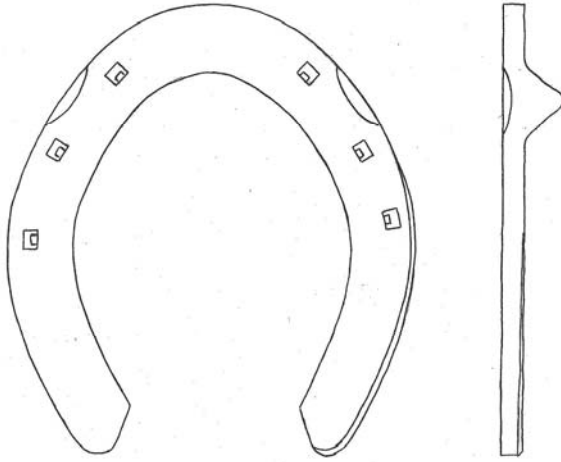
- Pair of Front Barshoes
 - 14" X 5/16" X 3/4"
 - 3/4 fullered straight bar
 - 6 nails, 5 city slim



136



- Pair of Hinds
 - 11 1/2" X 5/16" X 3/4"
 - Plain stamped
 - 6 nails, 5 city slim



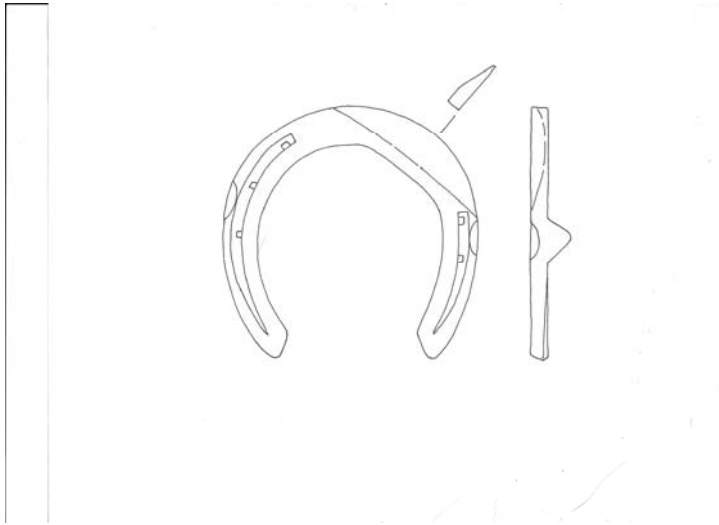
Time Limit: 55 minutes

Delta Specialty Forging Class

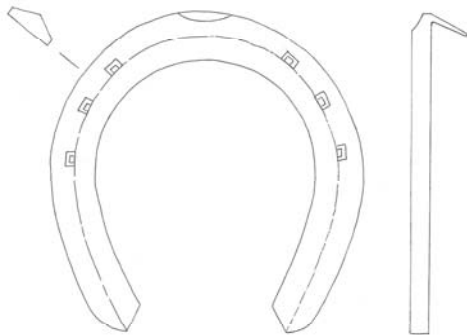
The AFA Rules Committee will select three shoes from a list of six. Competitors will not know which shoes they will make until the on-site competitors' meeting.

The six shoes in the Delta Specialty Forging pool:

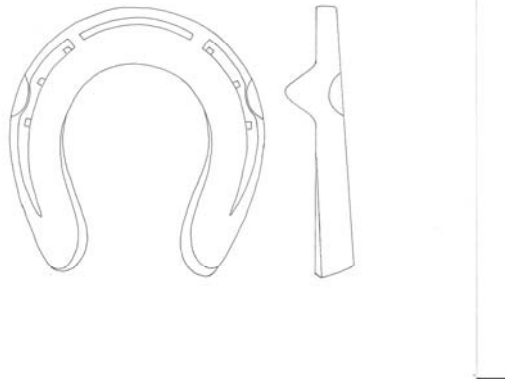
- **Diagonal Breakover Front Shoe**
 - 11 ½" X 3/8" X ¾"
 - Fullered
 - Side clips
 - Six MX60 nails



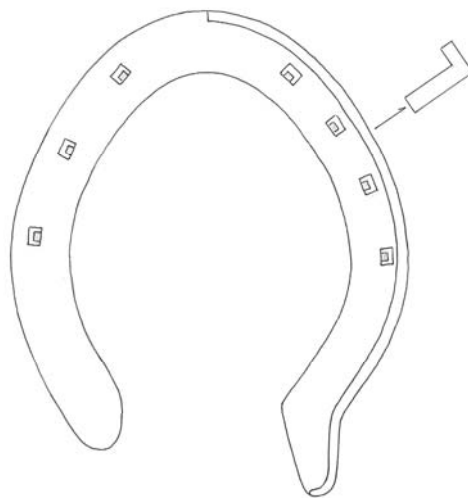
- **Diamond Section Shoe**
 - 10 ½" of ½" round stock
 - Hammer finished
 - Toe clip
 - No swedge blocks allowed
 - Punched for six 4 ½ Delta race nails



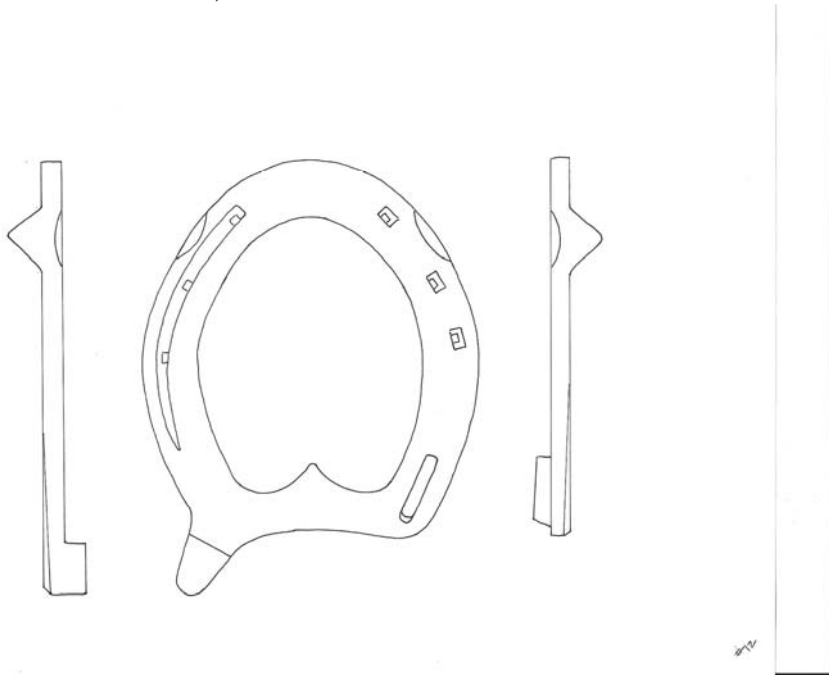
- Swelled Heel Front Aluminum
 - 10 ½" X 3/8" X 1" Aluminum
 - Toe insert
 - Side clips
 - Fullered
 - Six MX60 nails
 - Toe insert from 16" of 1/4 " round stock



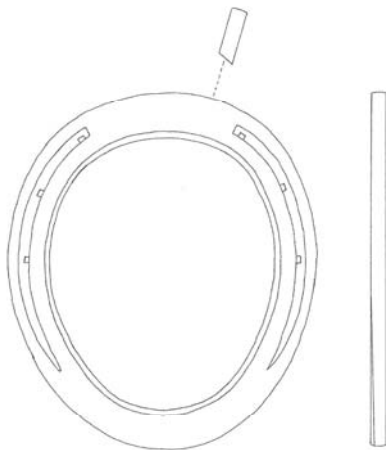
- Hind Shoe with Brazed on Outer Rim
 - 12" X ¼" X ¾"
 - Rim to run from center of toe to trailer and follow shape of trailer
 - Rim stock 18" X 1/4" X 1/8"
 - Punched
 - Seven nails, Delta 4 ½ city



- Hind Bar Shoe
 - 14" X 5/16" X 3/4"
 - Outside branch, fullered & heel caulk
 - Inside branch, brazed jar caulk in line with branch (from 16" of 1/4" round)
 - Quarter clips
 - Six nails, Delta 5 slim



- Egg Bar
 - 13 1/2" X 3/8" X 3/4"
 - Fullered
 - Six nails, 5 slim



Time Limit: 90 minutes

Vern Hornquist Class

- Heel Abscess Bar Shoe
 - 13" x 3/8" x 3/4"
 - Fullered and punched for seven #5 city head nails

Time Limit: 60 minutes

